

AECOM

PROJECT
H2Teesside DCO

APPLICANT
H2 Teesside Limited

CONSULTANT
AECOM Limited
100 Embankment,
Cathedral Approach,
Manchester, M3 7FB
www.aecom.com

- LEGEND**
- Proposed Development Site
 - Proposed Development Site - 1 km Buffer
 - Main Site
 - Principal Bedrock Aquifer - Low Vulnerability
 - Principal Bedrock Aquifer - Medium Vulnerability
 - Secondary Superficial Aquifer - Low Vulnerability
 - Secondary Superficial Aquifer - Medium Vulnerability
 - Secondary Superficial Aquifer - High Vulnerability
 - Secondary Bedrock Aquifer - Low Vulnerability
 - Secondary Bedrock Aquifer - Medium Vulnerability

Groundsure search area is based on the Red Line Boundary available at the time of the data purchase (March 2023).

- NOTES**
- 1: Reproduced from Ordnance Survey digital map data © Crown copyright 2024. All rights reserved. Licence number 0100031673.
 - 2: Data provided by © Groundsure (2023)
 - 3: Derived from BGS Digital Data under Licence. British Geological Survey. ©NERC.
 - 4: Groundsure search area is based on the Red Line Boundary available at the time of the data purchase (March 2023).

ISSUE PURPOSE
Environmental Statement

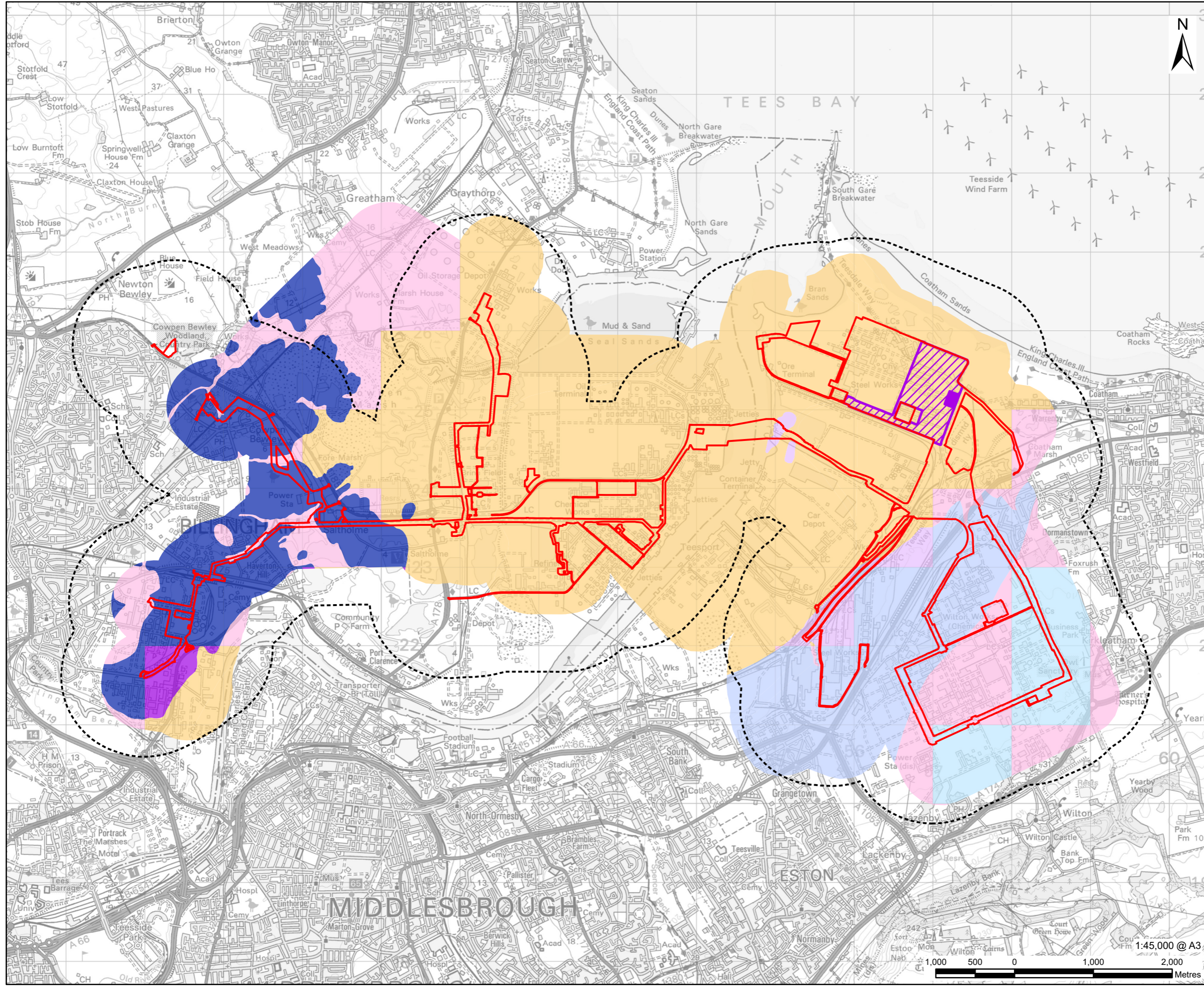
PROJECT NUMBER
60689030

FIGURE TITLE
Groundwater Vulnerability - Main Site

FIGURE NUMBER
Figure 10-14a



This drawing has been prepared for the use of AECOM's client. It may not be used, modified, reproduced or relied upon by third parties, except as agreed by AECOM or as required by law. AECOM accepts no responsibility, and denies any liability whatsoever, to any party that uses or relies on this drawing without AECOM's express written consent. Do not scale this document. All measurements must be obtained from the stated dimensions.



AECOM

PROJECT
H2 Teesside DCO

APPLICANT
H2 Teesside Limited

CONSULTANT
AECOM Limited
100 Embankment,
Cathedral Approach,
Manchester, M3 7FB
www.aecom.com

- LEGEND**
- Proposed Development Site
 - Proposed Development Site - 1 km Buffer
 - Carbon Dioxide Export Pipeline & High-Pressure Compression Station**
 - Carbon Dioxide - Export Pipeline
 - Carbon Dioxide - Above Ground Installation
 - Groundwater Vulnerability**
 - Principal Bedrock Aquifer - Low Vulnerability
 - Principal Bedrock Aquifer - Medium Vulnerability
 - Secondary Superficial Aquifer - Low Vulnerability
 - Secondary Superficial Aquifer - Medium Vulnerability
 - Secondary Superficial Aquifer - High Vulnerability
 - Secondary Bedrock Aquifer - Low Vulnerability
 - Secondary Bedrock Aquifer - Medium Vulnerability

Groundsure search area is based on the Red Line Boundary available at the time of the data purchase (March 2023).

- NOTES**
- 1: Reproduced from Ordnance Survey digital map data © Crown copyright 2024. All rights reserved. Licence number 0100031673.
 - 2: Data provided by © Groundsure (2023)
 - 3: Derived from BGS Digital Data under Licence. British Geological Survey. ©NERC.
 - 4: Groundsure search area is based on the Red Line Boundary available at the time of the data purchase (March 2023).

ISSUE PURPOSE
Environmental Statement

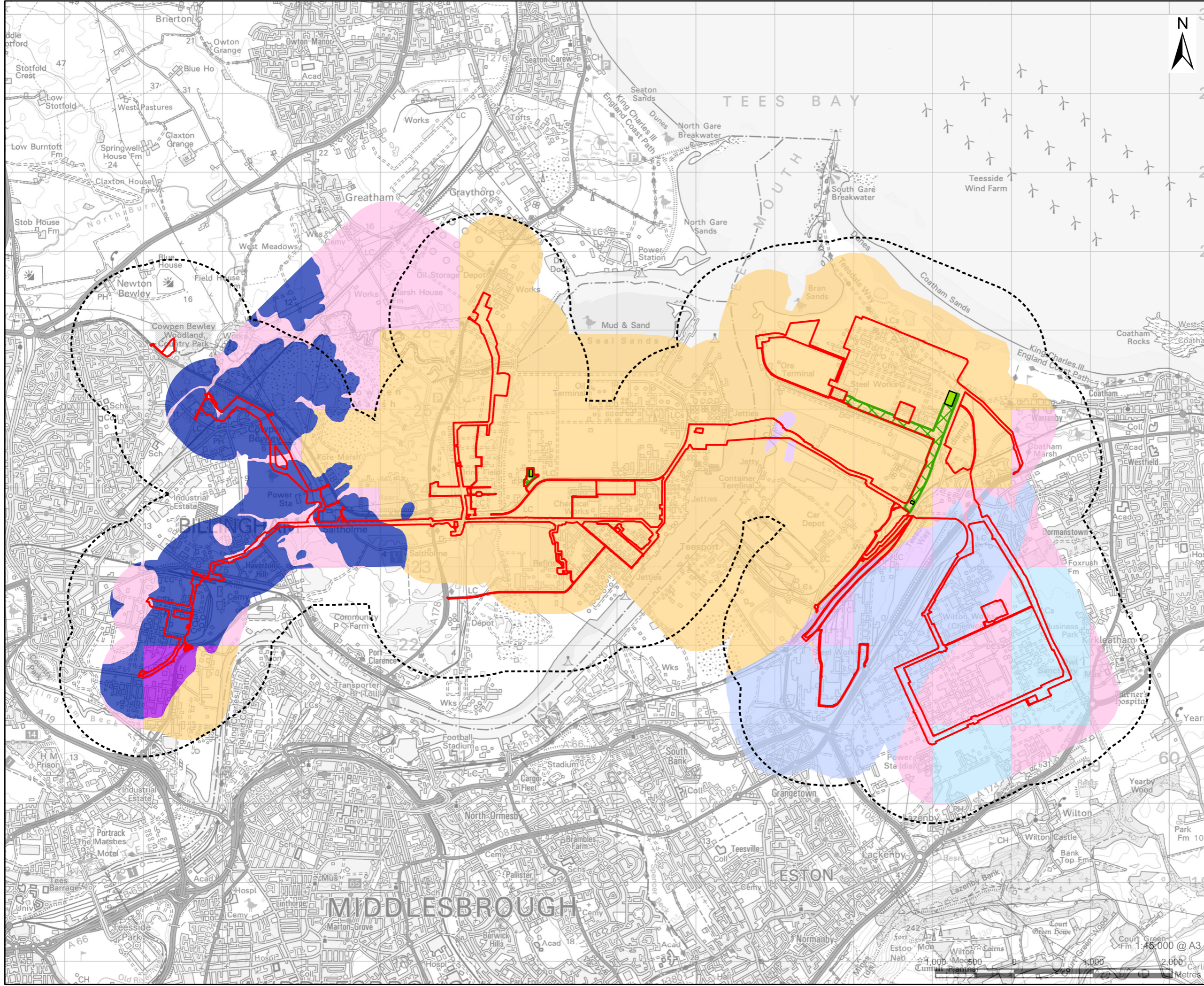
PROJECT NUMBER
60689030

FIGURE TITLE
Groundwater Vulnerability - Carbon Dioxide Export Pipeline and High-Pressure Compression Station

FIGURE NUMBER
Figure 10-14b



This drawing has been prepared for the use of AECOM's client. It may not be used, modified, reproduced or relied upon by third parties, except as agreed by AECOM or as required by law. AECOM accepts no responsibility, and denies any liability whatsoever, to any party that uses or relies on this drawing without AECOM's express written consent. Do not scale this document. All measurements must be obtained from the stated dimensions.



CONSULTANT

AECOM Limited
100 Embankment,
Cathedral Approach,
Manchester, M3 7FB
www.aecom.com

LEGEND

- Proposed Development Site
- Proposed Development Site - 1 km Buffer

Natural Gas Connection Works

- Natural Gas Connection - Underground High Pressure Gas Pipeline
- Natural Gas Connection - Above Ground Installation

Groundwater Vulnerability

- Principal Bedrock Aquifer - Low Vulnerability
- Principal Bedrock Aquifer - Medium Vulnerability
- Secondary Superficial Aquifer - Low Vulnerability
- Secondary Superficial Aquifer - Medium Vulnerability
- Secondary Superficial Aquifer - High Vulnerability
- Secondary Bedrock Aquifer - Low Vulnerability
- Secondary Bedrock Aquifer - Medium Vulnerability

Groundsure search area is based on the Red Line Boundary available at the time of the data purchase (March 2023).

NOTES

- 1: Reproduced from Ordnance Survey digital map data © Crown copyright 2024. All rights reserved. Licence number 0100031673.
- 2: Data provided by © Groundsure (2023)
- 3: Derived from BGS Digital Data under Licence. British Geological Survey. ©NERC.
- 4: Groundsure search area is based on the Red Line Boundary available at the time of the data purchase (March 2023).

ISSUE PURPOSE

Environmental Statement

PROJECT NUMBER

60689030

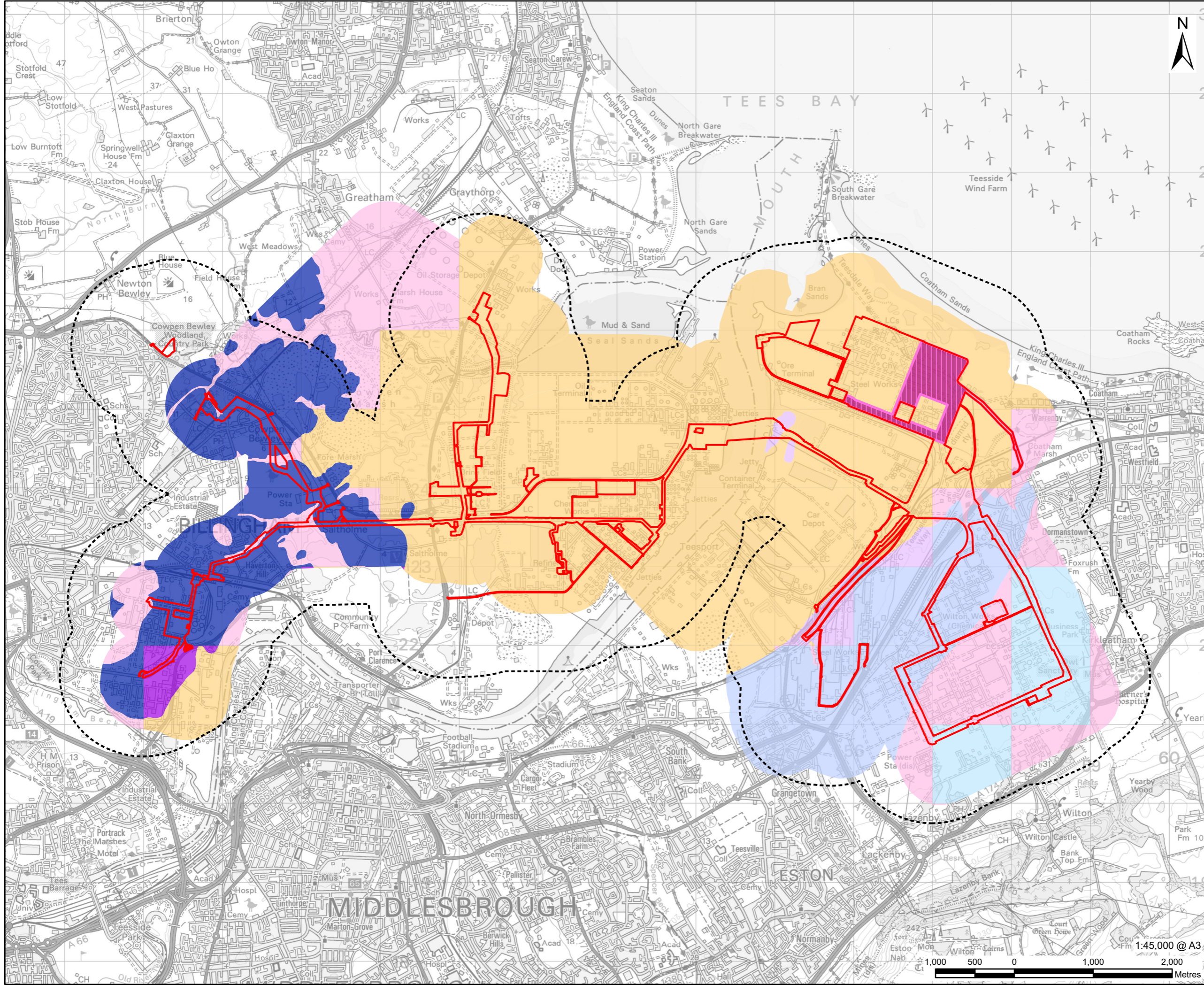
FIGURE TITLE

Groundwater Vulnerability - Natural Gas Connection Works

FIGURE NUMBER

Figure 10-14c

This drawing has been prepared for the use of AECOM's client. It may not be used, modified, reproduced or relied upon by third parties, except as agreed by AECOM or as required by law. AECOM accepts no responsibility, and denies any liability whatsoever, to any party that uses or relies on this drawing without AECOM's express written consent. Do not scale this document. All measurements must be obtained from the stated dimensions.



AECOM

PROJECT
H2Teesside DCO

APPLICANT
H2 Teesside Limited

CONSULTANT
AECOM Limited
100 Embankment,
Cathedral Approach,
Manchester, M3 7FB
www.aecom.com

- LEGEND**
- Proposed Development Site
 - Proposed Development Site - 1 km Buffer
 - Water Supply Connection Works**
 - Water Supply Connection Works
 - Wastewater Disposal Works
 - Groundwater Vulnerability**
 - Principal Bedrock Aquifer - Low Vulnerability
 - Principal Bedrock Aquifer - Medium Vulnerability
 - Secondary Superficial Aquifer - Low Vulnerability
 - Secondary Superficial Aquifer - Medium Vulnerability
 - Secondary Superficial Aquifer - High Vulnerability
 - Secondary Bedrock Aquifer - Low Vulnerability
 - Secondary Bedrock Aquifer - Medium Vulnerability

Groundsure search area is based on the Red Line Boundary available at the time of the data purchase (March 2023).

- NOTES**
- 1: Reproduced from Ordnance Survey digital map data © Crown copyright 2024. All rights reserved. Licence number 0100031673.
 - 2: Data provided by © Groundsure (2023)
 - 3: Derived from BGS Digital Data under Licence. British Geological Survey. ©NERC.
 - 4: Groundsure search area is based on the Red Line Boundary available at the time of the data purchase (March 2023).

ISSUE PURPOSE
Environmental Statement

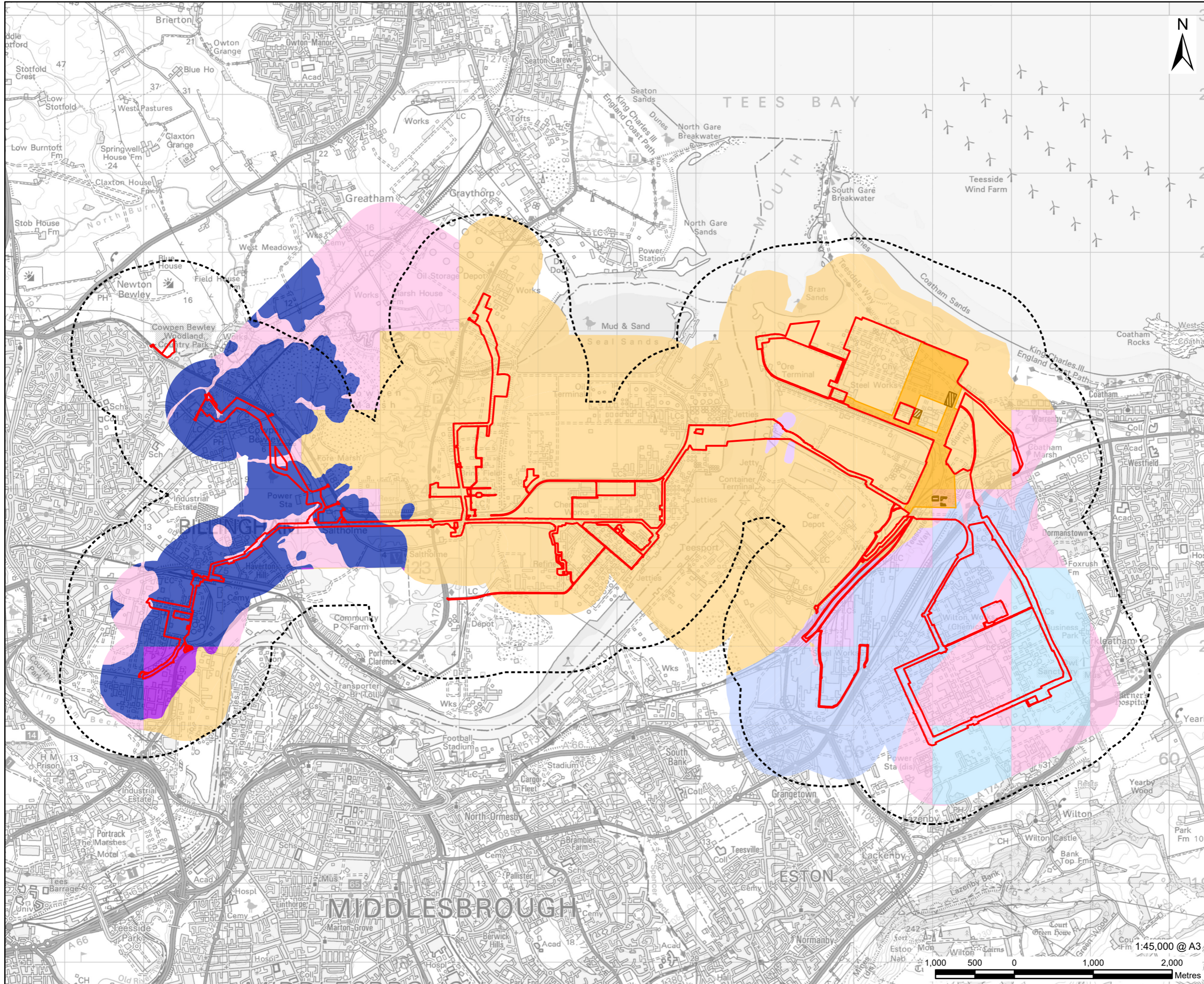
PROJECT NUMBER
60689030

FIGURE TITLE
Groundwater Vulnerability - Water and Wastewater Connection Works

FIGURE NUMBER
Figure 10-14d



This drawing has been prepared for the use of AECOM's client. It may not be used, modified, reproduced or relied upon by third parties, except as agreed by AECOM or as required by law. AECOM accepts no responsibility, and denies any liability whatsoever, to any party that uses or relies on this drawing without AECOM's express written consent. Do not scale this document. All measurements must be obtained from the stated dimensions.



AECOM

PROJECT
H2Teesside DCO

APPLICANT
H2 Teesside Limited

CONSULTANT
AECOM Limited
100 Embankment,
Cathedral Approach,
Manchester, M3 7FB
www.aecom.com

- LEGEND**
- Proposed Development Site
 - Proposed Development Site - 1 km Buffer
 - Electrical Connection Works**
 - Electrical Connection Works
 - Above Ground Installation Connecting Work No. 3A to Pellet-Sinter Substation
 - Above Ground Installation Connecting Work No. 3A to Tod Point Substation
 - Above Ground Installation Connecting Work No. 3A to a New Substation
 - Groundwater Vulnerability**
 - Principal Bedrock AQUIFER - Low Vulnerability
 - Principal Bedrock AQUIFER - Medium Vulnerability
 - Secondary Superficial AQUIFER - Low Vulnerability
 - Secondary Superficial AQUIFER - Medium Vulnerability
 - Secondary Superficial AQUIFER - High Vulnerability
 - Secondary Bedrock AQUIFER - Low Vulnerability
 - Secondary Bedrock AQUIFER - Medium Vulnerability

Groundsure search area is based on the Red Line Boundary available at the time of the data purchase (March 2023).

- NOTES**
- 1: Reproduced from Ordnance Survey digital map data © Crown copyright 2024. All rights reserved. Licence number 0100031673.
 - 2: Data provided by © Groundsure (2023)
 - 3: Derived from BGS Digital Data under Licence. British Geological Survey. ©NERC.
 - 4: Groundsure search area is based on the Red Line Boundary available at the time of the data purchase (March 2023).

ISSUE PURPOSE
Environmental Statement

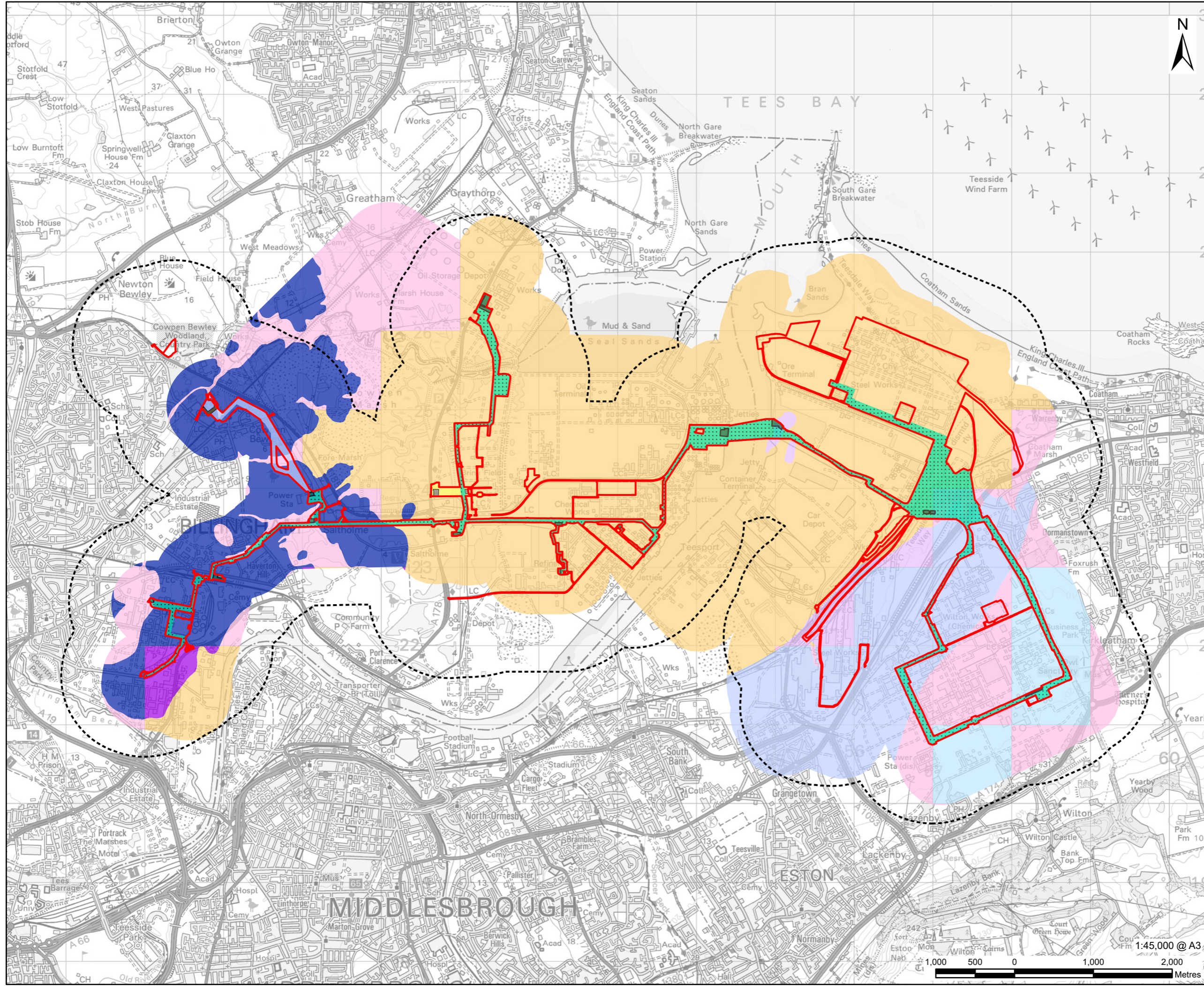
PROJECT NUMBER
60689030

FIGURE TITLE
Groundwater Vulnerability - Electrical Connection Works

FIGURE NUMBER
Figure 10-14e



This drawing has been prepared for the use of AECOM's client. It may not be used, modified, reproduced or relied upon by third parties, except as agreed by AECOM or as required by law. AECOM accepts no responsibility, and denies any liability whatsoever, to any party that uses or relies on this drawing without AECOM's express written consent. Do not scale this document. All measurements must be obtained from the stated dimensions.



AECOM

PROJECT
H2Teesside DCO

APPLICANT
H2 Teesside Limited

CONSULTANT
AECOM Limited
100 Embankment,
Cathedral Approach,
Manchester, M3 7FB
www.aecom.com

LEGEND

- Proposed Development Site
- Proposed Development Site - 1 km Buffer
- Hydrogen Distribution Network**
- Overground and Underground Pipelines
- Overground and Underground Pipelines to connect to Work No. 6B.2
- Overground and Underground Pipelines to connect to Work No. 6B.3
- Above Ground Installations
- Above Ground Installation at Cowpen Bewley
- Above Ground Installation at Saltholme Brinefields
- Groundwater Vulnerability**
- Principal Bedrock Aquifer - Low Vulnerability
- Principal Bedrock Aquifer - Medium Vulnerability
- Secondary Superficial Aquifer - Low Vulnerability
- Secondary Superficial Aquifer - Medium Vulnerability
- Secondary Superficial Aquifer - High Vulnerability
- Secondary Bedrock Aquifer - Low Vulnerability
- Secondary Bedrock Aquifer - Medium Vulnerability

Groundsure search area is based on the Red Line Boundary available at the time of the data purchase (March 2023).

NOTES

- 1: Reproduced from Ordnance Survey digital map data © Crown copyright 2024. All rights reserved. Licence number 0100031673.
- 2: Data provided by © Groundsure (2023)
- 3: Derived from BGS Digital Data under Licence. British Geological Survey. ©NERC.
- 4: Groundsure search area is based on the Red Line Boundary available at the time of the data purchase (March 2023).

ISSUE PURPOSE

Environmental Statement

PROJECT NUMBER

60689030

FIGURE TITLE

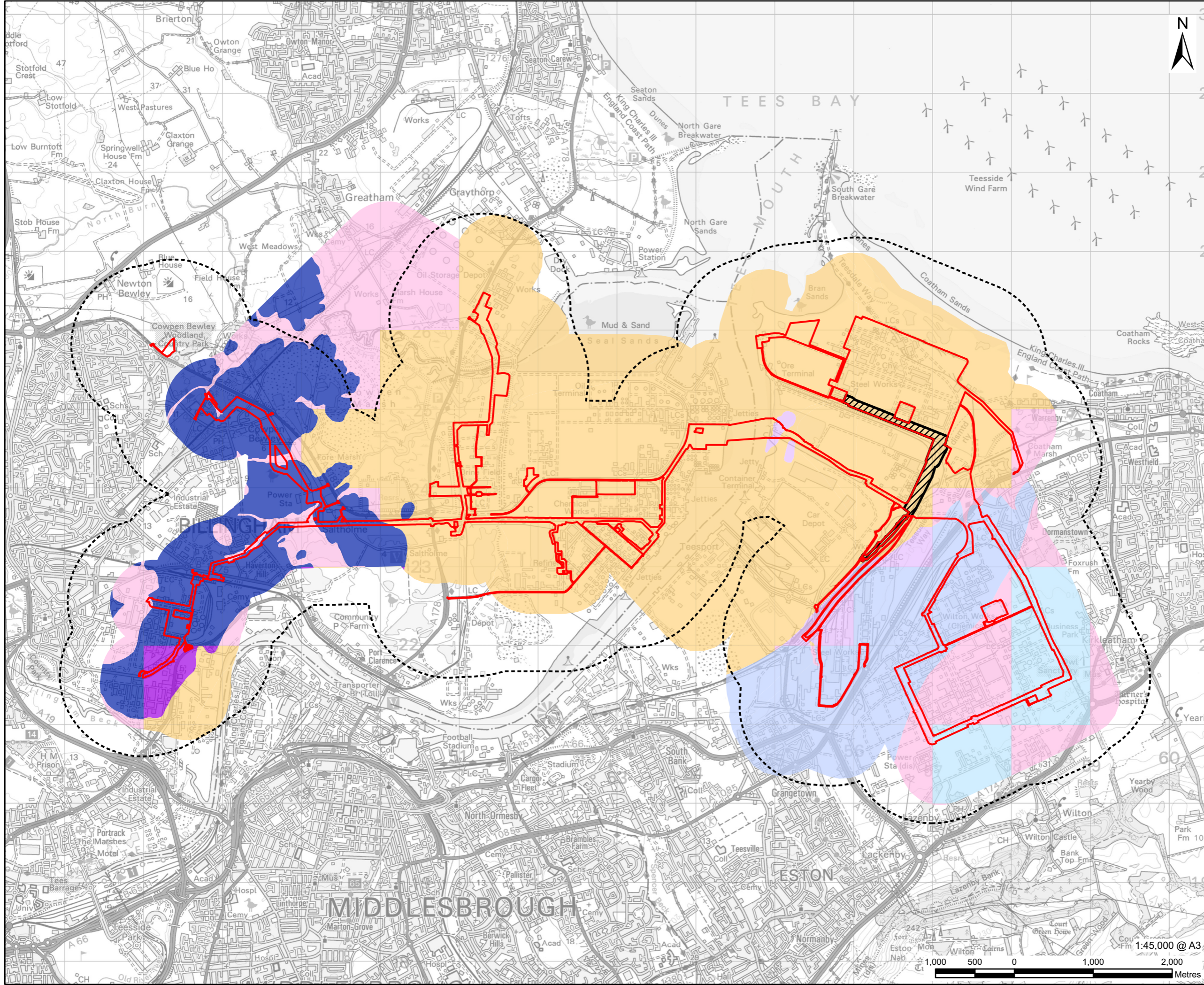
Groundwater Vulnerability - Hydrogen Distribution Network

FIGURE NUMBER

Figure 10-14f



This drawing has been prepared for the use of AECOM's client. It may not be used, modified, reproduced or relied upon by third parties, except as agreed by AECOM or as required by law. AECOM accepts no responsibility, and denies any liability whatsoever, to any party that uses or relies on this drawing without AECOM's express written consent. Do not scale this document. All measurements must be obtained from the stated dimensions.



- LEGEND**
- Proposed Development Site
 - Proposed Development Site - 1 km Buffer
 - Oxygen and Nitrogen Gas Connections
 - Principal Bedrock Aquifer - Low Vulnerability
 - Principal Bedrock Aquifer - Medium Vulnerability
 - Secondary Superficial Aquifer - Low Vulnerability
 - Secondary Superficial Aquifer - Medium Vulnerability
 - Secondary Superficial Aquifer - High Vulnerability
 - Secondary Bedrock Aquifer - Low Vulnerability
 - Secondary Bedrock Aquifer - Medium Vulnerability

Groundsure search area is based on the Red Line Boundary available at the time of the data purchase (March 2023).

- NOTES**
- 1: Reproduced from Ordnance Survey digital map data © Crown copyright 2024. All rights reserved. Licence number 0100031673.
 - 2: Data provided by © Groundsure (2023)
 - 3: Derived from BGS Digital Data under Licence. British Geological Survey. ©NERC.
 - 4: Groundsure search area is based on the Red Line Boundary available at the time of the data purchase (March 2023).

ISSUE PURPOSE
Environmental Statement

PROJECT NUMBER
60689030

FIGURE TITLE
Groundwater Vulnerability - Oxygen and Nitrogen Gas Connections

FIGURE NUMBER
Figure 10-14g

This drawing has been prepared for the use of AECOM's client. It may not be used, modified, reproduced or relied upon by third parties, except as agreed by AECOM or as required by law. AECOM accepts no responsibility, and denies any liability whatsoever, to any party that uses or relies on this drawing without AECOM's express written consent. Do not scale this document. All measurements must be obtained from the stated dimensions.